

TERMINATIONS

Type F (75 Ω), DC - 3 GHz, 2 Watts

SPECIFICATIONS:

Models: TF030M, TF030F

RoHS
Compliant

AEROFLEX
A passion for performance.

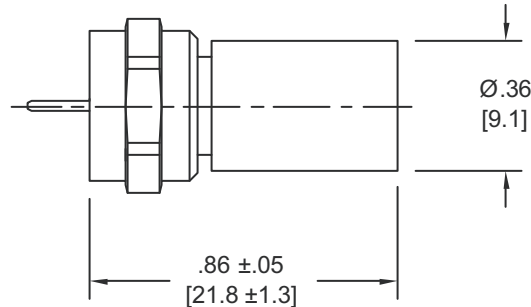
Electrical:

Frequency Range _____ DC - 3 GHz
VSWR
DC - 2 GHz _____ 1.10:1 Max.
2 - 3 GHz _____ 1.20:1 Max.
Input Power _____ 2 Watts Avg. @ +25°C
Derated Linearly to 1 Watts @ +125°C

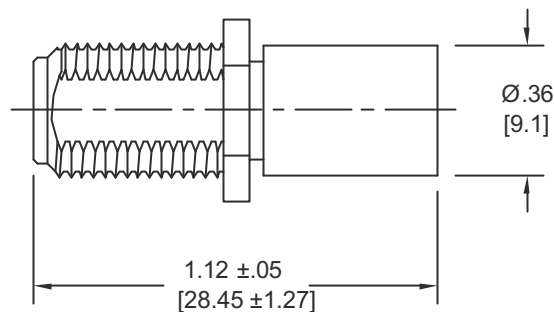
Mechanical:

Type F Connectors _____ Nickel Plated Brass
Housings _____ Passivated Stainless Steel
Center Contacts _____ Nickel Plated Brass

Model Number: TF030M
Type F Male Connector



Model Number: TF030F
Type F Female Connector



Note: Dimensions in Brackets are Expressed in Millimeters and are for Reference Only.

TF-TERM: REV J

AEROFLEX
INMET

Aeroflex / Inmet, Inc. • 300 Dino Drive, Ann Arbor, MI 48103 • U.S.A.
888-244-6638 or 734-426-5553 • FAX: 734-426-5557
www.aeroflex.com/inmet • inmet@aeroflex.com