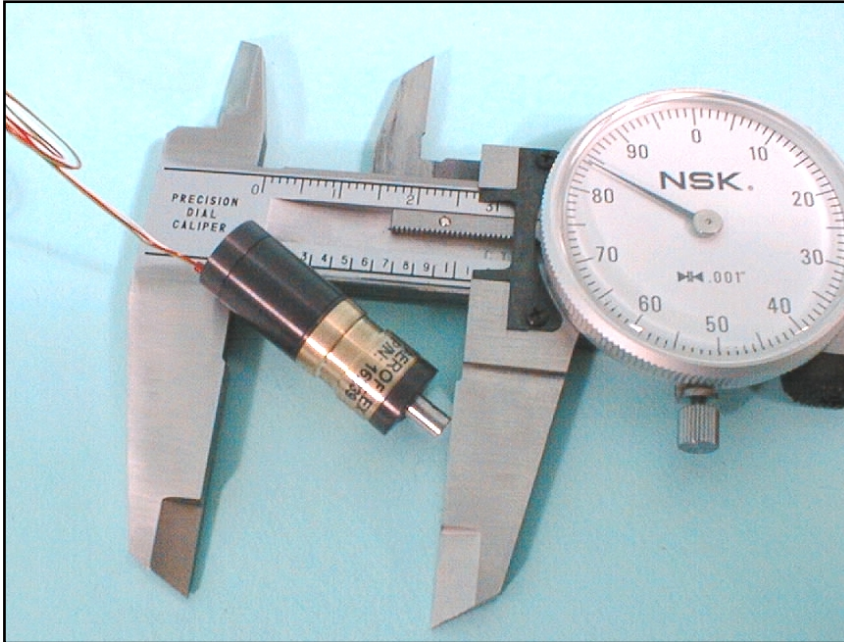
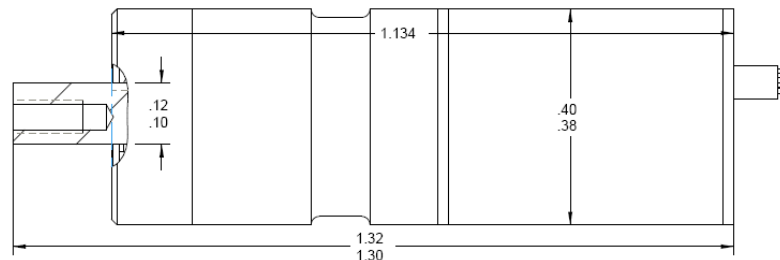
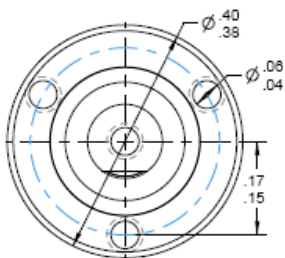


10MM Brushless DC Motor with Gearhead



Specification	16356	16358	Units	Basis
Gear Ratio	16:1	256:1	ratio	By Design
Stall Torque	2.8	34	in-oz	Maximum
Operating Torque	1.3	18.5	in-oz	Nominal
Output Speed	358	22	RPM	Maximum
Backlash	0.5	0.5	degrees	Maximum
Weight	0.32	0.35	ounces	Maximum

Motor Specification	Value	Units	Basis
Voltage	2.2	VDC	Nominal
Power	3	watts	Maximum
Km	0.17	in-oz/√watt	Nominal
Kt	0.52	in-oz/amp	Minimum
Phase Resistance	9	ohms	Nominal
Phase Inductance	100	μH	Nominal
Phases/Poles	3/4	phases/poles	By Design
Redundant Windings	No	windings	By Design



For the very latest specifications visit www.aeroflex.com/Motion