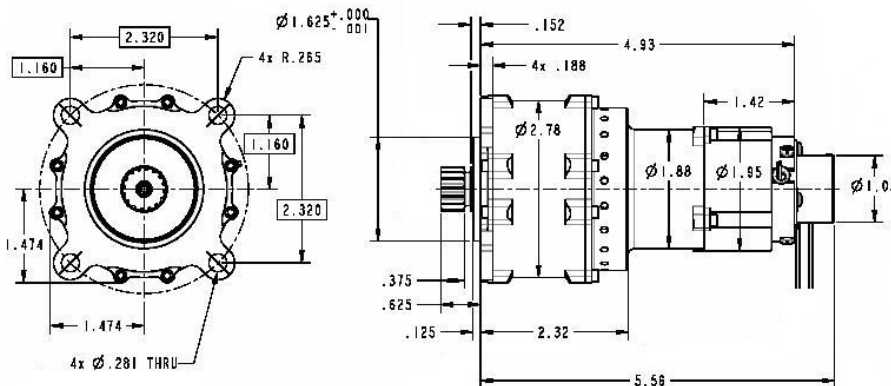


Motor Gearhead PN 16385



Specification	Value	Units	Basis
Gear Ratio	8000:1	ratio	By Design
Stall Torque	378	in-lb	Maximum
Operating Torque	2200	in-lb	Nominal
Output Speed	0.25	rpm	Nominal
Backlash	0.25	degrees	Maximum
Weight	3.75	pounds	Nominal

Motor Specification	Value	Units	Basis
Voltage	20	VDC	Nominal
Power	70	watts	Maximum
Km	1.8	in-oz \sqrt{watt}	Nominal
Kt	2.0	in-oz/amp	Minimum
Phase Resistance	1	ohms	Nominal
Phase Inductance	100	μH	Nominal
Phases/Poles	3/6	phases/poles	By Design
Redundant Windings	Yes	windings	By Design
Brake Holding Torque	20	in-lb	Minimum
Brake Voltage	13	VDC	Maximum



For the very latest specifications visit www.aeroflex.com/Motion