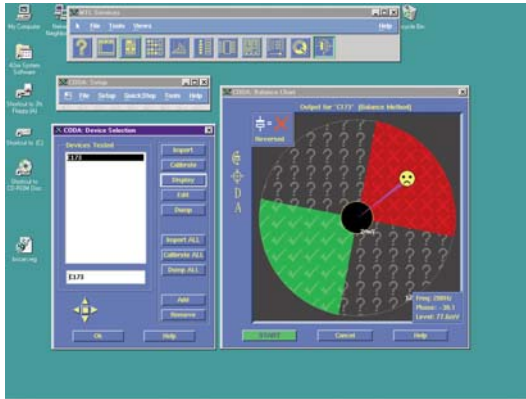


ATE

4200 Series CODA - Capacitor Orientation Defect Analysis

AEROFLEX
A passion for performance.



Enables the detection of reversed electrolytic capacitors to increase the fault coverage capability of the test system

- Supports axial, radial and surface mount packages
- Stable and repeatable measurements
- Three measurement modes
- Detects reversed capacitors within a parallel set
- Graphical user interface for rapid debug
- Extends existing capacitor test capability
- Patented technique

Introduction

Conventional In-Circuit test systems are limited when it comes to testing electrolytic capacitors. Whilst they are proficient at measuring the value of the capacitor, they are unable to determine it's orientation. A reversed component will fail some time after the PCB is powered up, occasionally during the In-Circuit test, more often during a soak test, or worse of all, after delivery to the customer.

Although competitive methods have claimed the ability to test reversed capacitors, the Aeroflex CODA technique offers a first with truly reliable and repeatable measurements. Both single components and those found within parallel sets can be tested and diagnosed down to the failing capacitor.

The Aeroflex CODA technique enables the 4200 Series to detect reversed capacitors at the

In-Circuit test stage where rework costs are comparatively low. Consequently, by preventing the fault progressing to later stages of the production chain, the system contributes to a reduction in manufacturing costs.

Mechanical Aspects

The hardware required by the CODA technique falls into three sections. The detection point at the end of the probe is a suitably sized plate. The probe itself is clamped above the unit under test and connected to a CMUX signal processing board. The CMUX card is mounted in the fixture and supports up to 32 probes. An 8 channel version is also available for smaller applications.

Three Test Methods

There are three measurement modes to allow the test engineer a high degree of flexibility across a range of component configurations. Common to each mode is the application of an AC stimulus across the capacitor under test with phase and magnitude measurements being taken via the probe. The three modes, balance, compare and ratio, differ in the number and interpretation of the measurements taken. Appropriate test mode selection is made using the Graphical User Interface.

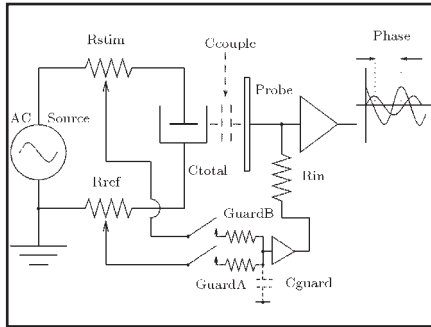
Test Calibration

Each of the three test modes require the measurement to be compared against that of a known good component. This process involves the selection of a suitable stimulus frequency and the recording of the actual measurement under those conditions. There are three methods of selecting a suitable frequency, fixed, sweep and auto, again selected using the Graphical User Interface.

Graphical User Interface

The Computer Aided Program Generation software CAPG is used to generate 4200 Series test programs. Reversed capacitor detection

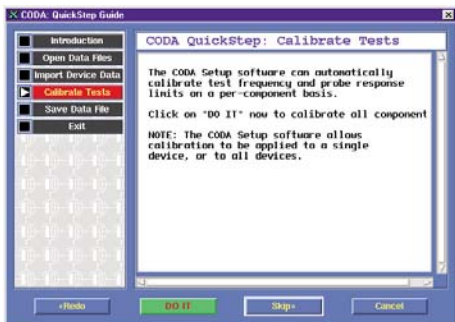
is treated in the same way as all other test methods in that it can be selected for appropriate components via the user interface. The relevant code is included in the test program which is then run through the debug process.



The CODA set up icon is contained in the top-level services panel. Whilst there a number of set up menus available, most test engineers will use the QuickStep option which is designed as a guide through all of the relevant processes.

The CODA Balance Chart screen shot shows the primary debug tool, indicating both phase and magnitude measurements. The various segments within the display indicate correct, reversed or unknown results.

The use of a Graphical User Interface allows the test engineer to quickly implement the method without extending the test programming time. In addition, these intuitive tools ensure that the technique is easy to learn, both for those familiar with the 4200 Series and also those new to the system.



QTest2 Support

As an alternative to using the QMUX hardware, the CODA CMUX board and probes can also be used to perform a QTest2 vectorless test on digital integrated circuits. This allows fixture costs to be reduced by using the lower cost CODA passive probe.

SPECIFICATION

Test Platforms

4215, 4220, 4230 and 4250

4200, 4205 and 4210 systems upgraded to PC control

Input Impedance

3.33 MΩ

Frequency response

20 Hz to 10 kHz

Select Inputs

HC logic levels

Protected by 10 kΩ resistor

Supply voltage

22 to 25 V DC, <100 mA

CHINA Beijing
Tel: [+86] (10) 6539 1166
Fax: [+86] (10) 6539 1778

CHINA Shanghai
Tel: [+86] (21) 5109 5128
Fax: [+86] (21) 6457 7668

FINLAND
Tel: [+358] (9) 2709 5541
Fax: [+358] (9) 804 2441

FRANCE
Tel: [+33] 1 60 79 96 00
Fax: [+33] 1 60 77 69 22

GERMANY
Tel: [+49] 8131 2926-0
Fax: [+49] 8131 2926-130

HONG KONG
Tel: [+852] 2832 7988
Fax: [+852] 2834 5364

INDIA
Tel: [+91] (0) 80 4115 4501
Fax: [+91] (0) 80 4115 4502

JAPAN
Tel: [+81] 3 3500 5591
Fax: [+81] 3 3500 5592

KOREA
Tel: [+82] (2) 3424 2719
Fax: [+82] (2) 3424 8620

SCANDINAVIA
Tel: [+45] 9614 0045
Fax: [+45] 9614 0047

SPAIN
Tel: [+34] (91) 640 11 34
Fax: [+34] (91) 640 06 40

UK Cambridge
Tel: [+44] (0) 1763 262277
Fax: [+44] (0) 1763 285353

UK Stevenage
Tel: [+44] (0) 1438 742200
Fax: [+44] (0) 1438 727601
Freephone: 0800 282388

USA
Tel: [+1] (316) 522 4981
Fax: [+1] (316) 522 1360
Toll Free: 800 835 2352

As we are always seeking to improve our products, the information in this document gives only a general indication of the product capacity, performance and suitability, none of which shall form part of any contract. We reserve the right to make design changes without notice. All trademarks are acknowledged. Parent company Aeroflex, Inc. ©Aeroflex 2010.

www.aeroflex.com
info-test@eroflex.com



Our passion for performance is defined by three attributes represented by these three icons: solution-minded, performance-driven and customer-focused.

