

CDMA Core Components and Device Automation Characterization (DAC)



- Ensures all enhancements or updates are quickly available to all customers independent of any 1X or EV-DO script release.
- Applicable to all CCF, CTIA and CDG test cases.
- Includes Device Automation Characterization (DAC)Script, which interrogates the Mobile Station under test for supported automation functions.
- DAC Script identifies the various automation functions (commands) supported on a Mobile Station, using ICD or diagnostic tools like CAIT/UDM, required for automating Conformance Scripts.
- Commands executed on the Mobile Station are characterized as Automated/Not Automated/Not Tested.
- It also identifies the automation status of the Conformance Script(s) on a particular Mobile Station. The status is characterized as Automated/Not Automated.
- Generates user-friendly HTML reports and stores the characterized information.Helps the user to identify which scripts should be executed in automation mode per Mobile Station
- The DAC script can identify commands supported on Mobile Stations from various manufacturers even with different software versions.
- Easy to use Windows™ user interface

PRODUCT DESCRIPTION

The CDMA Core Components for the Aeroflex CDMAAIME protocol test system contains all of the core software elements required to execute Conformance Scripts. This package is created as a means to ensure that all customers can receive the latest software enhancements and updates without the need to wait for individual test case packages to be released. This ensures that all enhancements and updates are quickly available to the user, independent of Conformance Scripts.

The CDMA Core Components release also includes a script supporting Device Automation Characterization (DAC) for Mobile Stations. DAC checks the status of different automation functions (commands) a device/ Mobile Station supports, using ICD or diagnostic tools like CAIT/UDM, and stores the characterized information in a 'Device Automation Characterization' report.

The DAC script can be executed using different Mobile Stations to generate reports for each of them. These reports help the user identify the various automation functions supported on different Mobile Stations and in deciding on the Mobile Station (which supports the most number of automation functions) to be used during Automation mode testing.

The script also generates a 'Script Automation Status' report which checks the automation status of all available Conformance Scripts. This report tells the user which of the available Conformance Scripts can be executed in automation.

DAC is an extremely powerful tool and is essential when selecting a test device and creating overnight automation test campaigns.

OVERVIEW

CDMA Core Components ensures that any enhancement or update in the common script components is quickly available to all users without the need to wait for future Conformance Script releases.

The CDMA Core Components updates the script software installed on both the Controller and Remote PC's. It is also applicable to both the 6204 and 6402 systems. CDMA Core Components also includes a script supporting Device Automation Characterization (DAC) feature, which can be executed on the CDMA-AIME System software. This script is in open source code written in Sax Basic language. It provides a Graphical User Interface (GUI), which makes its execution user-friendly for the novice user. DAC identifies the automation status of all automation commands and available conformance scripts.

The results are characterized in a 'Script Automation Status' Report, which lists all the Conformance scripts executed with their Automation status. Using this report the user can identify the scripts

that can be successfully executed in automation mode on the Mobile Station under test.

The report contains the status as Automated/Not Automated (displayed in Green/Red respectively) for all available scripts. Along with identification of the tested automation mode, which can be different diagnostic tools like CAIT/UDM or ICD or Key Sequences or AT commands. The user can execute this script using different Mobile Stations and compare the generated HTML reports for all Mobile Stations or even different software loads on a particular Mobile Station.

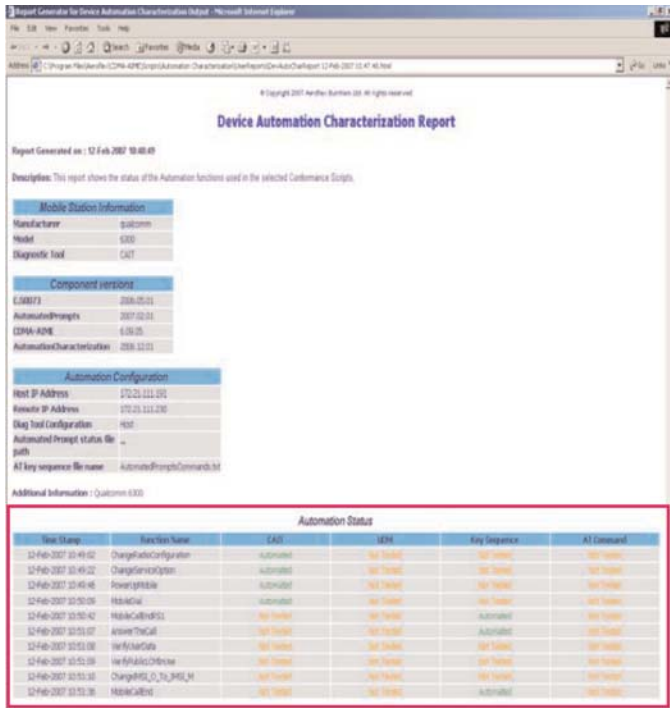
ACTIVITY WINDOW / LOG

The activity window displays the status of the tested automation functions to the user during the execution of the DAC Script. This is a run-time feature and keeps on updating the status in the activity window as the script progresses. A sample activity window is shown below.

Date Stamp	Time Stamp	Sector	Dir	Channel	Payload Type	Payload Content	SLP	Priority	Protocol Type	Protocol State	Packet Inf
12/6/2006	11:14:15.200	3	Information	*****
12/6/2006	11:14:15.600	3	Information	Aeroflex
12/6/2006	11:14:15.920	3	Information	System Software Version: CDMA-AIME 6.09.05
12/6/2006	11:14:16.320	3	Information	DRA1: Upper BaseStation Serial Number: 2782
12/6/2006	11:14:16.640	3	Information	CDMAlib Software Version: 2006.11.02
12/6/2006	11:14:16.960	3	Information	Script Filename: AutomationCharacterization
12/6/2006	11:14:17.360	3	Information	*****
12/6/2006	11:14:17.680	3	Information	Test Script: AutomationCharacterization started execution.
12/6/2006	11:14:18.080	3	Information	*****
12/6/2006	11:14:18.400	3	Information	Part Number: 61-0781
12/6/2006	11:14:18.800	3	Information	Script Software Version: 2006.12.01
12/6/2006	11:14:19.200	3	Information	Script Description: Device Automation Characterization
12/6/2006	11:14:19.600	3	Information	AutomatedPrompts Software Version 2006.12.01
12/6/2006	11:14:20.000	3	Information	*****
12/6/2006	11:14:32.240	3	Information	***** Function: ChangeRadioConfiguration started execution *****
12/6/2006	11:14:34.560	3	Information	CAIT: Automated
12/6/2006	11:14:34.960	3	Information	The function ChangeRadioConfiguration executed with
12/6/2006	11:14:35.288	3	Information	Value of PREF_FOR_RC parameter has been changed to 3
12/6/2006	11:14:35.360	3	Information	***** Function completed execution *****
12/6/2006	11:14:35.760	3	Information	***** Function: ChangeServiceOption started execution *****
12/6/2006	11:14:51.440	3	Information	CAIT: Automated
12/6/2006	11:14:51.840	3	Information	The function ChangeServiceOption executed with Automation
12/6/2006	11:14:52.192	3	Information	Value of Service Option parameter has been changed to 3
12/6/2006	11:14:52.240	3	Information	***** Function completed execution *****
12/6/2006	11:14:52.640	3	Information	***** Function: PowerUpMobile started execution *****
12/6/2006	11:15:07.120	3	Information	CAIT: Automated
12/6/2006	11:15:07.520	3	Information	The function PowerUpMobile executed with Automation mode 1.
12/6/2006	11:15:07.920	3	Information	***** Function completed execution *****
12/6/2006	11:15:08.480	3	Information	***** Function: VerifySlottedmodeConfigChange started execution
12/6/2006	11:15:08.880	3	Information	CAIT: Not Automated
12/6/2006	11:15:09.280	3	Information	Key Sequence: Not Automated
12/6/2006	11:15:09.680	3	Information	AT: Not Automated
12/6/2006	11:15:10.080	3	Information	The function VerifySlottedmodeConfigChange executed with
12/6/2006	11:15:10.560	3	Information	***** Function completed execution *****
12/6/2006	11:15:10.880	3	Information	***** Function: VerifyMobileIdState started execution *****
12/6/2006	11:15:16.480	3	Information	CAIT: Automated
12/6/2006	11:15:16.880	3	Information	The function VerifyMobileIdState executed with Automation
12/6/2006	11:15:17.280	3	Information	***** Function completed execution *****
12/6/2006	11:15:17.680	3	Information	***** Function: MobileDial started execution *****
12/6/2006	11:15:19.208	3	Information	Diagnostic Tool Scripting command not available
12/6/2006	11:15:23.004	3	Information	Diagnostic Tool Scripting command not available
12/6/2006	11:15:26.832	3	Information	Diagnostic Tool Scripting command not available
12/6/2006	11:15:30.504	3	Information	Diagnostic Tool Scripting command not available
12/6/2006	11:15:34.000	3	Information	CAIT: Automated
12/6/2006	11:15:34.400	3	Information	The function MobileDial executed with Automation mode 1.
12/6/2006	11:15:34.800	3	Information	***** Function completed execution *****
12/6/2006	11:37:52.640	3	Information	*****
12/6/2006	11:37:53.040	3	Information	Script Result: Executed Successfully
12/6/2006	11:37:53.440	3	Information	*****
12/6/2006	11:37:53.840	3	Information	Test Script AutomationCharacterization completed.

HTML REPORTS

The execution of the Device Automation Characterization Script generates two HTML Reports. 'DecAutoChar' report lists the status of the various functions and mode executed on a given Mobile Station. This report is referred to as the Device Automation Characterization report.



This report provides information about the Mobile Station used, Component Versions, and Automation Status of functions executed as explained below.

Mobile Station Information: This table contains information about manufacturer, model and diagnostic tool used for characterization.

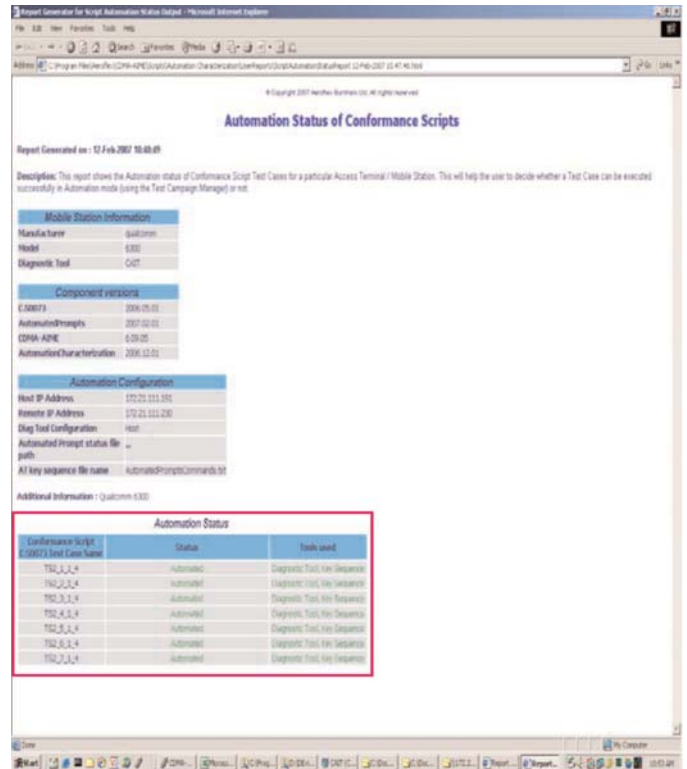
Component Versions: This table contains information about the versions of Conformance Scripts used for characterization and other components.

Automation Configuration: These fields contain details of Automation Parameters used for execution of the script (e.g. COM Port).

Additional Information: This field is used by the operator to hold any additional information that they wish to record.

Automation Status: This table shows the status of various automation functions executed using ICD, CAIT, UDM, key sequence or AT commands.

The second report lists the script automation status for various Conformance Scripts and is called the 'Script Automation Status' report.



This file will help the user in identifying conformance scripts that can be successfully executed in automation mode on a given Mobile Station. This file provides the information regarding the Mobile Station, Component Versions, Automation Configuration, and Automation Status, etc., as explained below:

Mobile Station Information: This table contains information about Manufacturer, Model and Diagnostic Tool used for characterization.

Component Versions: This table contains information about the versions of Conformance Scripts used for characterization and other components.

Automation Configuration: These fields contain details of Automation Parameters used for execution of the script (e.g. COM Port).

Additional Information: This field is used by the operator to hold any additional information that they wish to record. Automation Status: This table shows the status of the conformance scripts executed using ICD, CAIT, UDM, key sequence or AT commands.

LICENSE OPTIONS

Note: Device Automation Characterization Script requires the following Aeroflex software options:

- Option CDMA-200-PREV7 (CDMA Core script component for P_REV 7)
- Option CDMA-200-PREV6 (CDMA Core script component for P_REV 6)
- Option 155 Data Automation support
- Option 111 CDMA2000 1X Support Further requirements are detailed below:
 - The CDMA-AIME system must be installed on the Controller PC.
 - The Conformance Script(s), which support(s) DAC must be installed on the Controller PC.
 - The Controller PC must be connected to the 6204 or 6402 system.
 - The Mobile Station must be connected to the Controller or Remote PC depending upon whether the user is using diagnostic tool from the Controller or Remote PC respectively.
- The Diagnostic Tool "QCTest CDMA Air Interface Tester (CAIT™)" version 2.6.18.0 and higher or UDM version 3.41.122.2 must be installed on the Controller or Remote PC.

CHINA Beijing

Tel: [+86] (10) 6539 1166
Fax: [+86] (10) 6539 1778

CHINA Shanghai

Tel: [+86] (21) 5109 5128
Fax: [+86] (21) 5150 6112

FINLAND

Tel: [+358] (9) 2709 5541
Fax: [+358] (9) 804 2441

FRANCE

Tel: [+33] 1 60 79 96 00
Fax: [+33] 1 60 77 69 22

GERMANY

Tel: [+49] 8131 2926-0
Fax: [+49] 8131 2926-130

HONG KONG

Tel: [+852] 2832 7988
Fax: [+852] 2834 5364

INDIA

Tel: [+91] 80 5115 4501
Fax: [+91] 80 5115 4502

KOREA

Tel: [+82] (2) 3424 2719
Fax: [+82] (2) 3424 8620

SCANDINAVIA

Tel: [+45] 9614 0045
Fax: [+45] 9614 0047

SPAIN

Tel: [+34] (91) 640 11 34
Fax: [+34] (91) 640 06 40

UK Burnham

Tel: [+44] (0) 1628 604455
Fax: [+44] (0) 1628 662017

UK Cambridge

Tel: [+44] (0) 1763 262277
Fax: [+44] (0) 1763 285353

UK Stevenage

Tel: [+44] (0) 1438 742200
Fax: [+44] (0) 1438 727601
Freephone: 0800 282388

USA

Tel: [+1] (316) 522 4981
Fax: [+1] (316) 522 1360
Toll Free: 800 835 2352

As we are always seeking to improve our products, the information in this document gives only a general indication of the product capacity, performance and suitability, none of which shall form part of any contract. We reserve the right to make design changes without notice. All trademarks are acknowledged. Parent company Aeroflex, Inc. ©Aeroflex 2006.

www.aeroflex.com
info-test@eroflex.com



Our passion for performance is defined by three attributes represented by these three icons: solution-minded, performance-driven and customer-focused.