



SERVICE INFORMATION LETTER

**Subject: GPSG-1000 GPS/Galileo Positional Simulator
Aeroflex P/N – 87339**

This Service Information Letter (SIL) is to inform current users of the GPSG-1000, of a new version of operational software that is currently available for download. This SIL also contains the steps required to update the unit's operational software.

Effectivity: All GPSG-1000 GPS/Galileo Positional Simulator's require this operational software update. Implementation of this SIL will change the operational software version from 1.0.0,201109081459 (or earlier) to version 2.0.0U,201111132109.

Summary of Changes:

1. Dynamic motion capability is functional. Dynamic motion allows the user to simulate a wide variety of bodies in motion, including those for pedestrian, automotive and aerospace applications.
2. Added new fading models to match the new dynamic motion capability.
3. Added external triggering capability for syncing the GPSG-1000 to test systems.
4. Improved user interface.

This document contains controlled technology or technical data under the jurisdiction of the Export Administration Regulations (EAR), 15 CFR 730-774. It cannot be transferred to any foreign third party without the specific prior approval of the U.S. Department of Commerce Bureau of Industry and Security (BIS). Violations of these regulations are punishable by fine, imprisonment, or both.

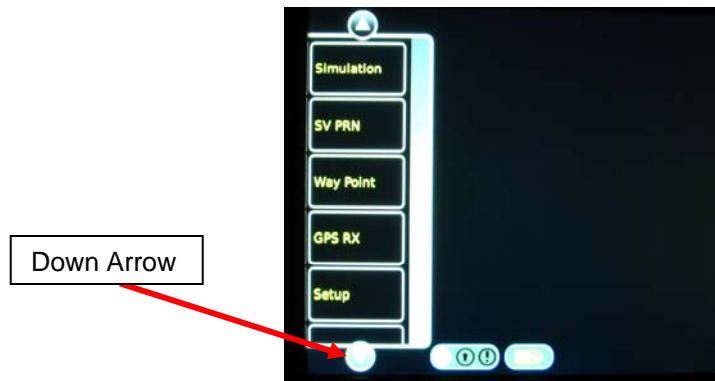
Directions for updating the GPSG-1000 Operational Software:

1. Open the GPSG-1000 operational software zip file from the following web location.

http://www.aeroflex.com/ats/products/product/Avionics/GPS_Simulators/GPSG-1000~713.html#files

NOTE: The recommended USB memory device is Aeroflex P/N 67325.

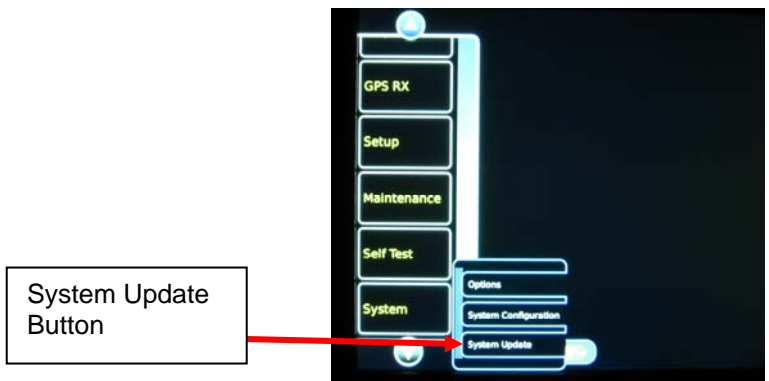
2. Ensure that any directories named AEROFLEX have been removed from the root directory of a USB memory device.
3. Extract all files from the zip file to the root directory of the USB memory device.
4. Apply power to the GPSG-1000 and press the POWER ON button to turn the unit on.
5. Allow approximately 3.5 minutes for the GPSG-1000 to complete the power up process.
6. From the power up screen press the down arrow on the menu bar to display additional menu options. See Picture 1.



Picture 1: Power up screen

7. Pressing the SYSTEM button on the menu bar will display the SYSTEM UPDATE button. See Picture 2.

This document contains controlled technology or technical data under the jurisdiction of the Export Administration Regulations (EAR), 15 CFR 730-774. It cannot be transferred to any foreign third party without the specific prior approval of the U.S. Department of Commerce Bureau of Industry and Security (BIS). Violations of these regulations are punishable by fine, imprisonment, or both.



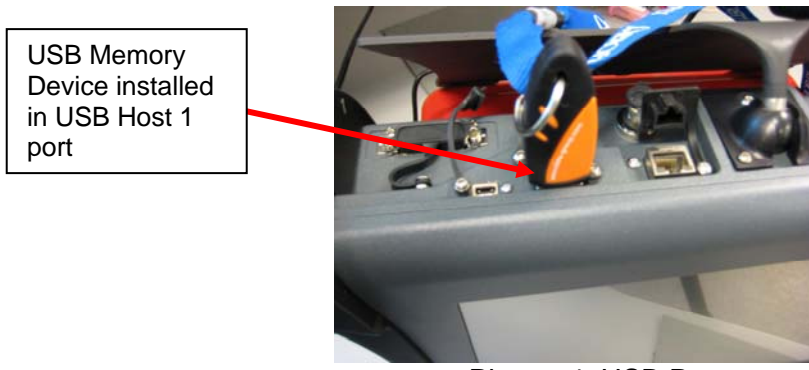
Picture 2: SYSTEM UPDATE button

8. Press the SYSTEM UPDATE button to enter the SYSTEM UPDATE page. See Picture 3.



Picture 3: SYSTEM UPDATE page

9. Install the USB memory device, containing the GPSG-1000 operational software, into the GPSG-1000 USB Host 1 or USB Host 2 port. See Picture 4.



Picture 4: USB Port

10. On the SYSTEM UPDATE page, press the COPY FROM USB button. This will copy the files from the USB Memory Device to the GPSG-1000 internal memory. The message “Copying Software Update” will be displayed in the STATUS window. See Picture 5.

This document contains controlled technology or technical data under the jurisdiction of the Export Administration Regulations (EAR), 15 CFR 730-774. It cannot be transferred to any foreign third party without the specific prior approval of the U.S. Department of Commerce Bureau of Industry and Security (BIS). Violations of these regulations are punishable by fine, imprisonment, or both.



PICTURE 5: STATUS window

11. Once all of the files have been copied from the USB Memory Device to the GPSG-1000 internal memory the files to be updated will be displayed in the RPM LIST window and the message “Files are ready to install” will be displayed in the STATUS window. See Picture 6.

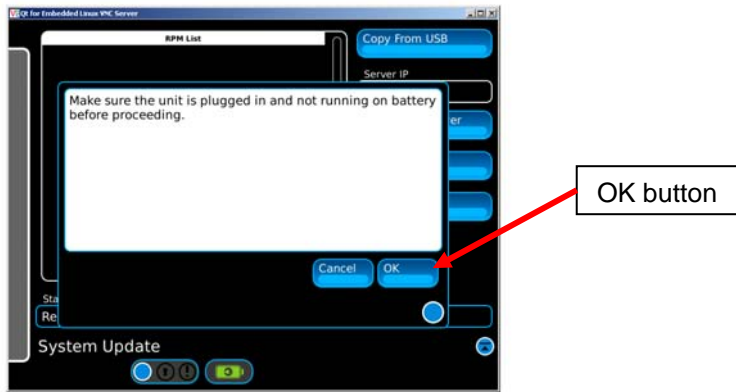


Picture 6: Files are ready to install

12. On the SYSTEM UPDATE page, press the INSTALL SOFTWARE button to install the updated GPSG-1000 operational software. See Picture 6.

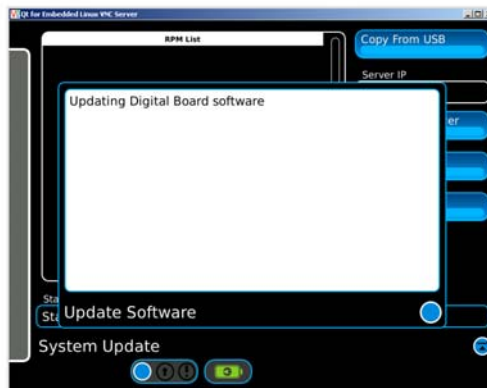
13. A pop-up window will be displayed instructing the operator to “Make sure the unit is plugged in and not running on battery before proceeding”. See Picture 7.

NOTE: This step is critical, since the battery going dead during the software load or cycling power on the GPSG-1000 during the software load will cause a system error and the unit will need to be returned to Aeroflex to correct the error.



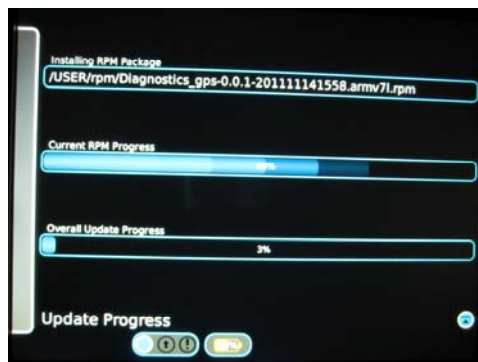
Picture 7: Plug into external power message

14. Once the GPSG-1000 is plugged into external power, press the OK button on the pop-up window to continue with the software update. See Picture 7.
15. A pop-up window will then be displayed stating “Updating Digital Board Software”. This window will be displayed for several minutes as the software is being installed. Do not attempt to stop the installation or cycle power on the GPSG-1000 at this point. See Picture 8.



Picture 8: Update Digital Board Software

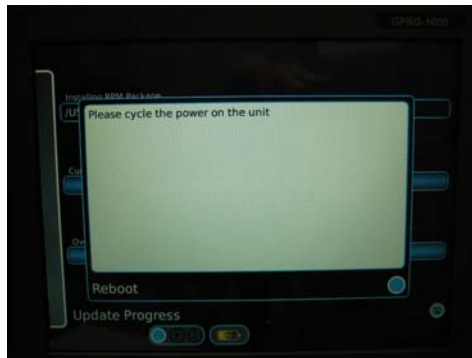
16. After several minutes the “Updating Digital Board Software” pop-up will go away and the UPDATE PROGRESS page is displayed. This page lists the “Installing RPM Package”, the “Current RPM Progress” and the “Overall Update Progress”. See Picture 9.



Picture 9: Update Progress Window

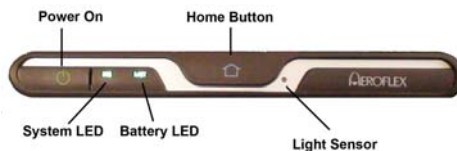
This document contains controlled technology or technical data under the jurisdiction of the Export Administration Regulations (EAR), 15 CFR 730-774. It cannot be transferred to any foreign third party without the specific prior approval of the U.S. Department of Commerce Bureau of Industry and Security (BIS). Violations of these regulations are punishable by fine, imprisonment, or both.

17. After all RPM files have been installed, a pop-up window will be displayed instructing the operator to “Please cycle the power on the unit”. See Picture 10.



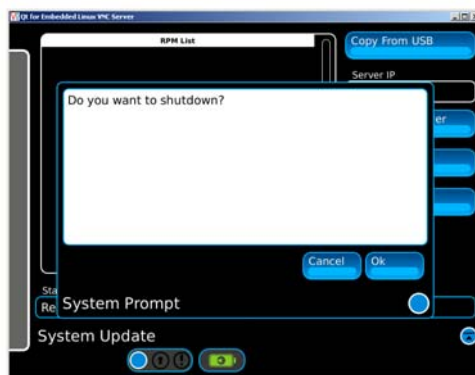
Picture 10: Cycle Power pop-up window

18. Press and hold the POWER ON button for a 1 to 2 seconds and then release. See Picture 11.



Picture 11: Power On button

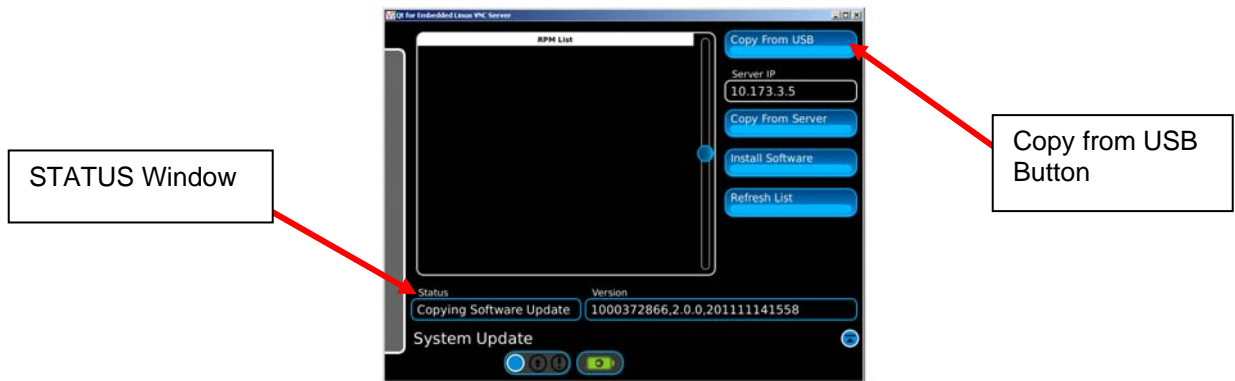
19. A pop-up window will be displayed asking the operator “Do you want to shutdown?”. Press the OK button to shut down the GPSG-1000. See Picture 12.



Picture 12: Shutdown pop-up window

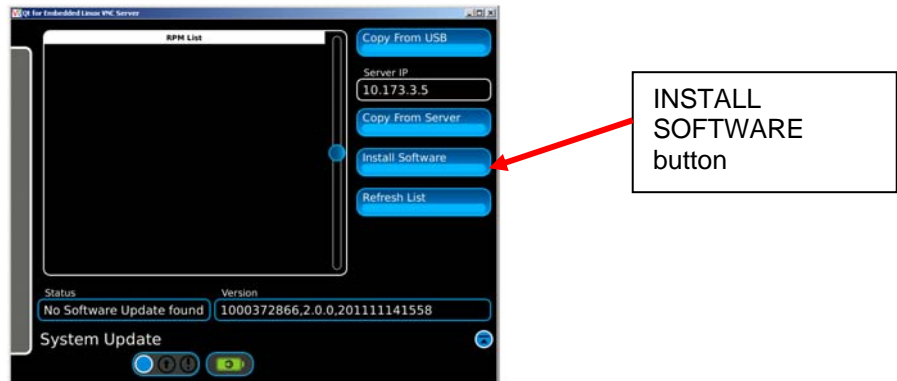
20. Press the POWER ON button to turn on the GPSG-1000 and allow up to 15 minutes for the GPSG-1000 to complete the software installation process and the power up process.
21. Repeat steps 6 thru 8 above to return to the SYSTEM UPDATE page.
22. On the SYSTEM UPDATE page, press the COPY FROM USB button. This will copy additional files from the USB Memory Device to the GPSG-1000 internal memory. The message “Copying Software Update” will be displayed in the STATUS window. See Picture 13.

This document contains controlled technology or technical data under the jurisdiction of the Export Administration Regulations (EAR), 15 CFR 730-774. It cannot be transferred to any foreign third party without the specific prior approval of the U.S. Department of Commerce Bureau of Industry and Security (BIS). Violations of these regulations are punishable by fine, imprisonment, or both.



PICTURE 13: STATUS window

23. When the software copy has completed the message “No Software Update found” will be displayed in the STATUS window, this is the normal message for this step of the software update process. See Picture 14.

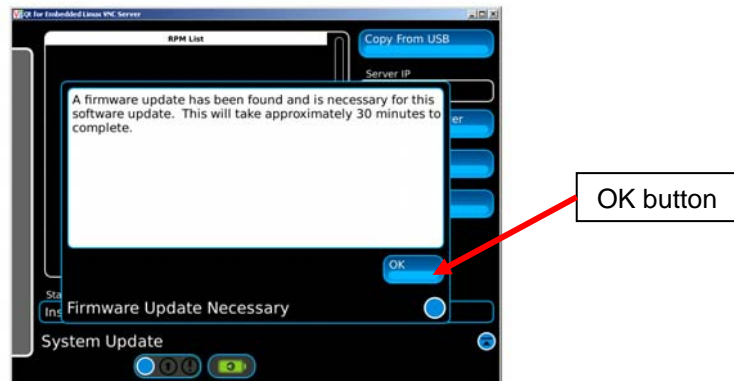


Picture 14: No Software Update Found

24. Remove the USB Memory Device from the USB Host port 1 or 2.
25. Press the INSTALL SOFTWARE button to begin the installation process. See Picture 14.
26. A pop-up window will be displayed instructing the operator to “Make sure the unit is plugged in and not running on battery before proceeding”. This step is critical, since the battery going dead during the software load or cycling power on the GPSG-1000 during the software load will cause a system error and the unit would need to be returned to the factory to correct the error. See Picture 7.
27. Once the GPSG-1000 is plugged into external power, press the OK button on the pop-up window to continue with the software update. See Picture 7.
28. After the OK button is pressed, “Starting GPS Slot0 update” will be displayed in the STATUS window and then a pop-up window will be displayed stating “Updating Digital Board software”. This step will take several minutes to complete. See Picture 8.

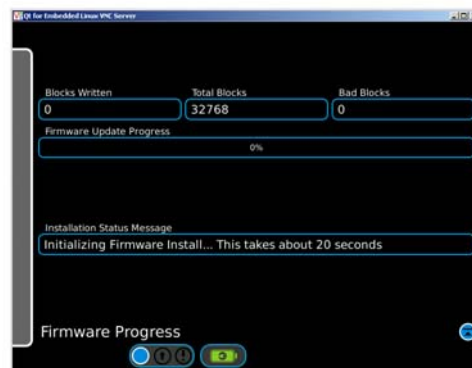
This document contains controlled technology or technical data under the jurisdiction of the Export Administration Regulations (EAR), 15 CFR 730-774. It cannot be transferred to any foreign third party without the specific prior approval of the U.S. Department of Commerce Bureau of Industry and Security (BIS). Violations of these regulations are punishable by fine, imprisonment, or both.

29. After the Digital Board software update has completed, a pop-up window will be displayed stating “A firmware update has been found and is necessary for this software update. This will take approximately 30 minutes to complete”. Press OK to continue with the firmware update. See Picture 15.



Picture 15: Firmware Update Message

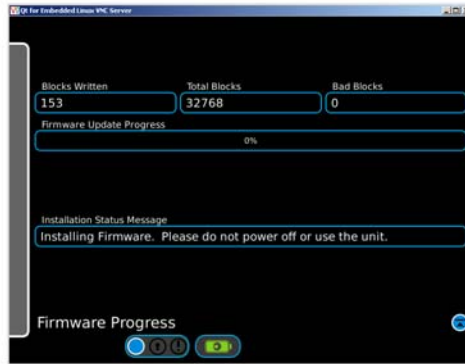
30. The FIRMWARE PROGRESS page will be displayed. The message “Initializing Firmware install...This takes about 20 seconds” will be displayed in the INSTALLATION STATUS MESSAGE window. The firmware initialization will take approximately 20 – 60 seconds. See Picture 16.



Picture 16: Firmware Progress

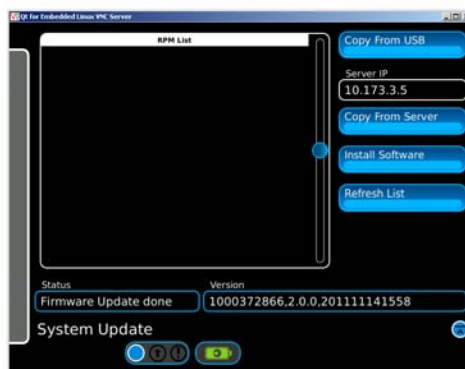
31. After the initialization has completed, the message “Installing Firmware. Please do not power off or use the unit.” is displayed in the INSTALLATION STATUS MESSAGE window and the installation is started. The installation progress may be tracked by the information in the BLOCKS WRITTEN window and the FIRMWARE UPDATE PROGRESS window. See Picture 17.

NOTE: The installation takes approximately 30 minutes and it is important that the installation process be allowed to complete without interruption.



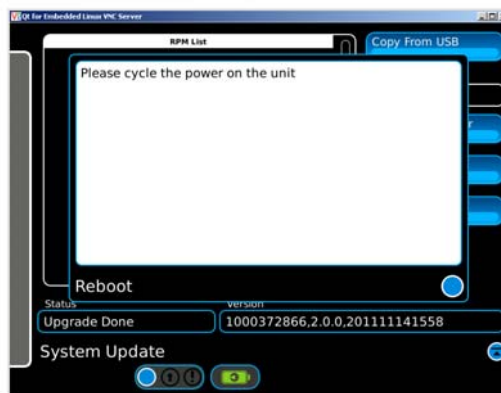
Picture 17: Firmware Progress

32. After the firmware update has completed, the message “Upgrade Done” will be displayed in the STATUS window. See Picture 18.



Picture 18: Firmware Update Done

33. A pop-up window is then displayed informing the operator to “Please cycle the power on the unit. See Picture 19.



Picture 19: Upgrade Done Message

34. Press and hold the POWER ON button for 1 to 2 seconds and then release. See Picture 11.

35. A pop-up window will be displayed asking the operator “Do you want to shutdown?”. Press the OK button to shut down the GPSG-1000. See Picture 12.

This document contains controlled technology or technical data under the jurisdiction of the Export Administration Regulations (EAR), 15 CFR 730-774. It cannot be transferred to any foreign third party without the specific prior approval of the U.S. Department of Commerce Bureau of Industry and Security (BIS). Violations of these regulations are punishable by fine, imprisonment, or both.

36. Press the POWER ON button to turn on the GPSG-1000 and allow up to 15 minutes for the GPSG-1000 to complete the software installation process and the power up process.
37. The software update procedure is now complete.

This document contains controlled technology or technical data under the jurisdiction of the Export Administration Regulations (EAR), 15 CFR 730-774. It cannot be transferred to any foreign third party without the specific prior approval of the U.S. Department of Commerce Bureau of Industry and Security (BIS). Violations of these regulations are punishable by fine, imprisonment, or both.

Revision History

Revision	Date	Reason	Reference
AA	07/27/11	New Release	
AB	09/09/11	Update for Version 1.0.0 software release	
AC	11/15/11	Update for Version 2.0.0 software release	

This document contains controlled technology or technical data under the jurisdiction of the Export Administration Regulations (EAR), 15 CFR 730-774. It cannot be transferred to any foreign third party without the specific prior approval of the U.S. Department of Commerce Bureau of Industry and Security (BIS). Violations of these regulations are punishable by fine, imprisonment, or both.